

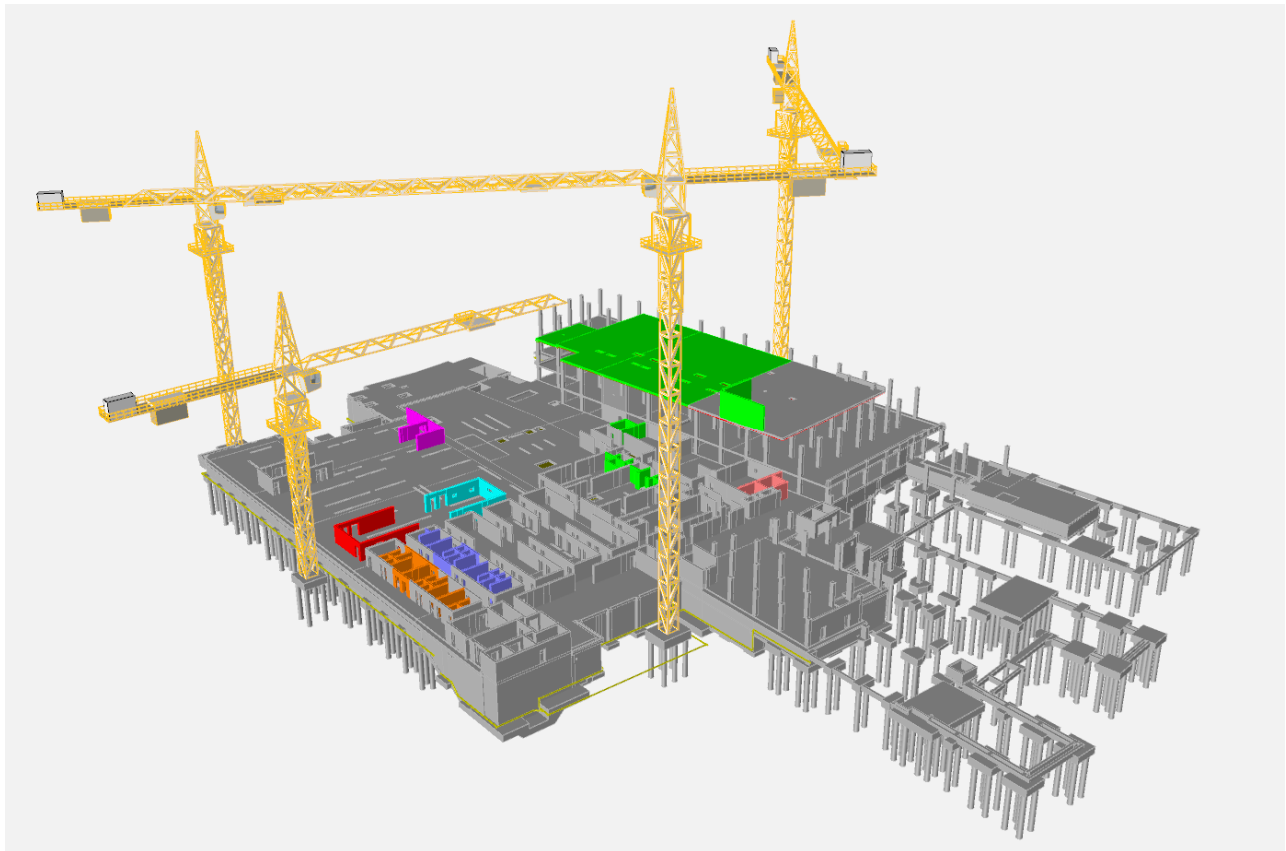
McCarthy-Mortenson NBAF A Joint Venture
1980 Denison Ave
Manhattan, Kansas 66502



To whom it may concern:

We are currently accepting applications for employment for Carpenters and Laborers for the NBAF Project.

The National Bio and Agro-Defense Facility (NBAF) is an exciting project located in Manhattan Kansas and the largest self-perform concrete project in McCarthy's history. The project is currently underway with mass excavation of the Main Laboratory Facility, and concrete foundations are scheduled to start the end of October 2015. The self-perform concrete portion for the Main Lab is scheduled to last until the middle of 2018 with concrete for the Outbuildings finishing up towards the end of 2019. The Project is located in Manhattan, KS which is approximately 125 miles west of Kansas City, MO.



McCarthy-Mortenson (McMjv) will be offering **\$900**, **\$725** and **\$650** (taxable) subsistence per week for General Foreman, Foreman and Journeyman respectively. The Project is currently scheduled on a (4) 10-hour day, Monday thru Thursday work week.

If interested please visit our website to apply <http://mcmjv.com/mcmjv-team-opportunities/>